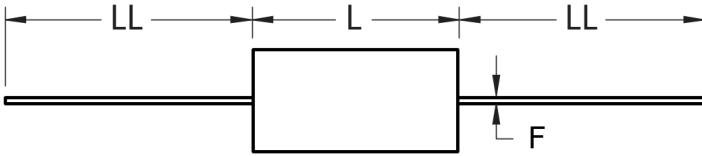
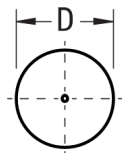


**FRONT VIEW**



**SIDE VIEW**



Click [here](#) for the 3D model.

**Dimensions**

D	20.5mm NOM
L	33mm NOM
LL	40mm +/-5mm
F	1mm NOM

**Packaging Specifications**

Packaging	Bulk, Bag
Packaging Quantity	100

**General Information**

Series	C4C
Dielectric	Metallized Polypropylene
Style	Axial
RoHS	Yes
Lead	Wire Leads
AEC-Q200	No
Typical Component Weight	11.2 g
Miscellaneous	Polyester Tape & Resin Protection.

**Specifications**

Capacitance	0.1 uF
Capacitance Tolerance	5%
Voltage DC	2000 VDC
Voltage AC	630 VAC
Temperature Range	-40/+85°C
Rated Temperature	70°C
Dissipation Factor	0.05%
Max dV/dt	1150 V/us
ESR	11.6 mOhms (100kHz)
Ripple Current	9 Amps (100kHz 70C), 115 Amps (Peak)