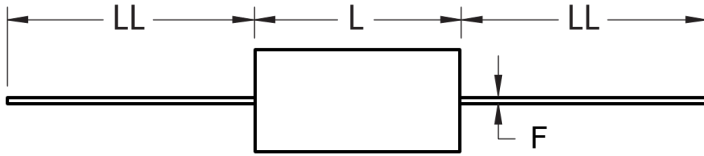
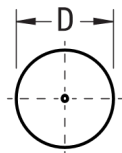


### FRONT VIEW



### SIDE VIEW



Click [here](#) for the 3D model.

#### Dimensions

D	30mm MAX
L	44mm MAX
LL	40mm +/-5mm
F	1.2mm NOM

#### Packaging Specifications

Packaging	Bulk, Bag
Packaging Quantity	50

#### General Information

Series	C4G
Dielectric	Metallized Polypropylene
Style	Axial
Features	Switching
RoHS	Yes
Lead	Wire Leads
AEC-Q200	No
Typical Component Weight	25.6 g
Miscellaneous	Polyester Tape & Resin Protection.

#### Specifications

Capacitance	10 uF
Capacitance Tolerance	5%
Voltage DC	400 VDC
Voltage AC	250 VAC
Temperature Range	-40/+85°C
Rated Temperature	70°C
Dissipation Factor	0.05%
Max dV/dt	30 V/us
ESR	2.7 mOhms (100kHz)
Ripple Current	12 Amps (100kHz 70C), 300 Amps (Peak)