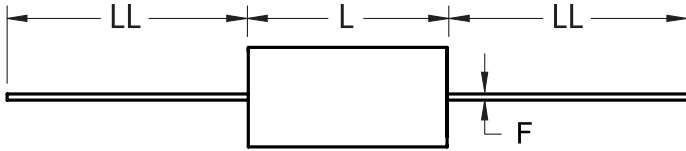
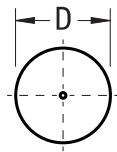


FRONT VIEW



SIDE VIEW



Click [here](#) for the 3D model.

General Information

Series	C4G
Dielectric	Metallized Polypropylene
Style	Axial
Features	Switching
RoHS	Yes
Lead	Wire Leads
AEC-Q200	No
Typical Component Weight	24.5 g
Miscellaneous	Polyester Tape & Resin Protection.

Dimensions

D	29.5mm MAX
L	44mm MAX
LL	40mm +/-5mm
F	1.2mm NOM

Packaging Specifications

Packaging	Bulk, Bag
Packaging Quantity	50

Specifications

Capacitance	2.2 uF
Tolerance	5%
Voltage DC	850 VDC
Voltage AC	450 VAC
Temperature Range	-40/+85°C
Rated Temperature	70°C
Dissipation Factor	0.05%
Max dV/dt	140 V/us
ESR	3 mOhms (100kHz)
Ripple Current	12 Amps (100kHz 70C), 308 Amps (Peak)

Statements of suitability for certain applications are based on our knowledge of typical operating conditions for such applications, but are not intended to constitute - and we specifically disclaim - any warranty concerning suitability for a specific customer application or use. This Information is intended for use only by customers who have the requisite experience and capability to determine the correct products for their application. Any technical advice inferred from this Information or otherwise provided by us with reference to the use of our products is given gratis, and we assume no obligation or liability for the advice given or results obtained.