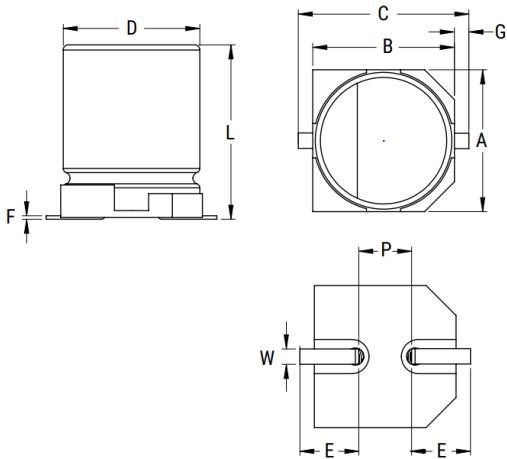


EDH108M050S9TAA

EDH, Aluminum, Aluminum Electrolytic, 1,000 uF, 20%, 50 VDC, -40/+105°C



Click [here](#) for the 3D model.

General Information

Series	EDH
Dielectric	Aluminum Electrolytic
Style	SMD Can
Description	Surface Mount, Aluminum Electrolytic
RoHS	Yes
Lead	V-Chip
Qualifications	AEC-Q200
AEC-Q200	Yes

Dimensions

D	16mm +/-0.5mm
L	16.5mm +/-1mm
W	2mm +/-0.2mm
F	0.3mm MAX
A	17mm +/-0.2mm
B	17mm +/-0.2mm
C	18.7mm MAX
E	5.8mm +/-0.2mm
G	1mm +/-0.2mm
P	6mm +/-0.2mm

Packaging Specifications

Packaging	T&R
-----------	-----

Specifications

Capacitance	1,000 uF
Tolerance	20%
Voltage DC	50 VDC, 63 VDC (Surge)
Temperature Range	-40/+105°C
Rated Temperature	105°C
Life	2000 Hrs
Dissipation Factor	18% 120Hz 20C
Ripple Current	800 mAmps (120Hz 105C)
Compare Ripple Current at 120Hz	0.8
High Temperature Solder	Yes
Leakage Current	500 uA (2min 20°C)
Impedance Ratio at -25C	2
Impedance Ratio at -40C	3

Statements of suitability for certain applications are based on our knowledge of typical operating conditions for such applications, but are not intended to constitute - and we specifically disclaim - any warranty concerning suitability for a specific customer application or use. This Information is intended for use only by customers who have the requisite experience and capability to determine the correct products for their application. Any technical advice inferred from this Information or otherwise provided by us with reference to the use of our products is given gratis, and we assume no obligation or liability for the advice given or results obtained.