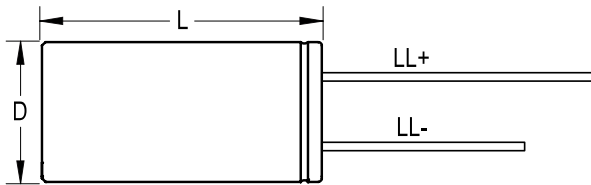


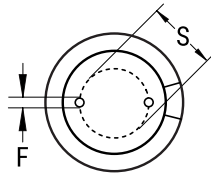
## ESL475M400AGMAA

ESL, Aluminum, Aluminum Electrolytic, 4.7 uF, 20%, 400 VDC, -40/+105°C, 3.5 mm

SIDE VIEW



TERMINAL END VIEW



Click [here](#) for the 3D model.

### General Information

Series	ESL
Dielectric	Aluminum Electrolytic
Description	Single Ended, Aluminum Electrolytic
RoHS	Yes
Lead	Wire Leads

### Dimensions

D	8mm +/-0.5mm
L	11.5mm +2.0mm
S	3.5mm +/-0.5mm
LL Negative	15mm MIN
LL Positive	20mm MIN
F	0.6mm NOM

### Packaging Specifications

Packaging	Bulk, Bag
-----------	-----------

### Specifications

Capacitance	4.7 uF
Tolerance	20%
Voltage DC	400 VDC, 450 VDC (Surge)
Temperature Range	-40/+105°C
Rated Temperature	105°C
Life	10000 Hrs
Dissipation Factor	20%
ESR	12 Ohms (100kHz 20C)
Ripple Current	110 mAmps (100kHz 105C)
Leakage Current	47.6 uA (2min 20°C)
Impedance Ratio at -40C	7

Statements of suitability for certain applications are based on our knowledge of typical operating conditions for such applications, but are not intended to constitute - and we specifically disclaim - any warranty concerning suitability for a specific customer application or use. This Information is intended for use only by customers who have the requisite experience and capability to determine the correct products for their application. Any technical advice inferred from this Information or otherwise provided by us with reference to the use of our products is given gratis, and we assume no obligation or liability for the advice given or results obtained.