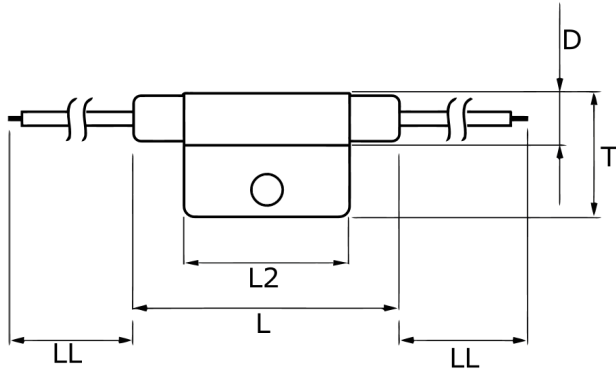


TRS5-60BLRU

Aliases (USEG60BLR00000)

KEMET, TRS, Thermal Reed Switch, Axial, 2.5C Temperature Accuracy, High Reliability, High-Speed Response, Long Operational Life, Excellent Environmental Durability, High Temperature Accuracy, 60°C, Break



Click [here](#) for the 3D model.

Dimensions

| | |
|----|-----------|
| D | 8.2mm MAX |
| L | 50mm MAX |
| L2 | 29mm MAX |
| T | 20mm MAX |
| LL | 200mm NOM |

Packaging Specifications

| | |
|--------------------------|----------------|
| Packaging | Rubberband Box |
| Typical Component Weight | 8.5 g |

General Information

| | |
|----------------|---|
| Series | TRS |
| Type | Thermal Reed Switch |
| Style | Axial |
| Description | Thermal Reed Switch |
| Features | High Reliability, High-Speed Response, Long Operational Life, Excellent Environmental Durability, High Temperature Accuracy |
| Lead | Cables |
| RoHS | Yes |
| REACH | Yes |
| Qualifications | UL, CSA |

Specifications

| | |
|-----------------------------|---|
| Switching Temperature | 60C +/-2.5C |
| Temperature Range | -20/+130°C |
| Contact Type | Break |
| Voltage DC | 100 VDC MAX (Opening/Closing), 1500 VAC/1 minute or 1800 VAC/1 second |
| Current | 0.5 Amps AC/DC MAX (Opening/Closing), 1 mAmps MIN (5VDC, Opening/Closing) |
| ESR | 150 mOhms MAX (Contact Resistance) |
| Max Opening/Closing Power | 50 (AC/DC) |
| Max Opening/Closing Voltage | 140 (AC) |
| Differential Temperature | 10C Maximum |