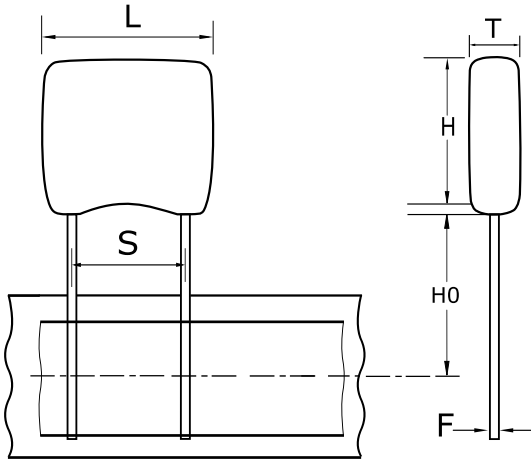


C320C125J5N5TA7303

Aliases (C320C125J5N5TATR)

GoldMax 300 Comm X8L HT150C, Ceramic, 1.2 uF, 5%, 50 VDC, X8L, "GoldMax, Commercial Standard", 2.54 mm



Click [here](#) for the 3D model.

General Information

Series	GoldMax 300 Comm X8L HT150C
Style	Radial
Description	"GoldMax, Commercial Standard"
RoHS	Yes
Termination	Tin
Lead	Wire Leads
Failure Rate	N/A
AEC-Q200	No
Halogen Free	Yes

Dimensions

L	5.08mm MAX
H	5.84mm MAX
T	3.18mm MAX
S	2.54mm +/-0.78mm
H0	18mm MIN
F	0.51mm +0.1/-0.025mm

Packaging Specifications

Packaging	T&R, 305mm
Packaging Quantity	2500

Specifications

Capacitance	1.2 uF
Tolerance	5%
Voltage DC	50 VDC
Dielectric Withstanding Voltage	125 VDC
Temperature Range	-55/+150°C
Temp. Coefficient	X8L
Dissipation Factor	2.5%
Aging Rate	3% Loss/Decade Hour
Insulation Resistance	833.3 MOhms

Statements of suitability for certain applications are based on our knowledge of typical operating conditions for such applications, but are not intended to constitute - and we specifically disclaim - any warranty concerning suitability for a specific customer application or use. This Information is intended for use only by customers who have the requisite experience and capability to determine the correct products for their application. Any technical advice inferred from this Information or otherwise provided by us with reference to the use of our products is given gratis, and we assume no obligation or liability for the advice given or results obtained.