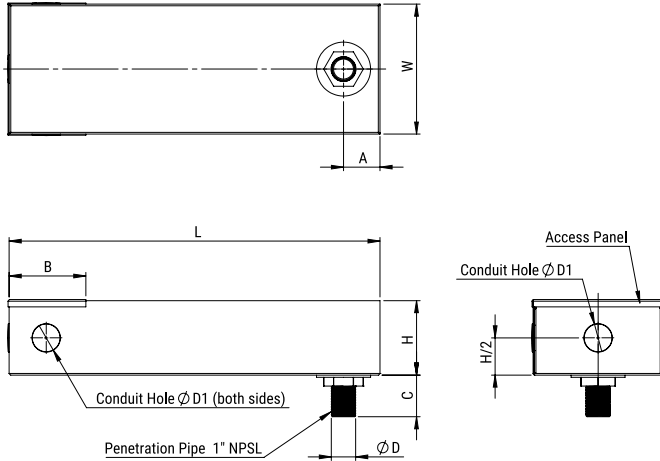


FLLE2060ASRW1

Aliases (LLE2060ASRW1)

Obsolete

EMI Filters, KEMET, FLLE2-SR, Screen Room Filters, Noise Suppression, 660x205x106mm



Click [here](#) for the 3D model.

General Information

Series	FLLE2-SR
Style	Screen Room Filters
Description	Single Phase Power Line Filters for Shielded Rooms and Secure Areas
Features	Single Phase
Phase	Single-phase
RoHS	Yes
Qualifications	UL 1283
AEC-Q200	No
Lead	1" NPSL
Terminal Type	1" NPSL

Specifications

Voltage AC	480 VAC
Rated Current	60 A
Ripple Current	60 A
Rated Temperature	40°C
Temperature Range	-25/+85°C
Climate Category	25/085/21
Leakage Current	2,290 mA
DC Resistance	5.5 mOhms
Capacitance	20 uF

Dimensions

D	34mm MIN
L	660mm MIN
W	205mm MIN
H	106mm MIN
Lead	1" NPSL
A	50mm
B	82mm
D1	35
C	57mm

Packaging Specifications

Packaging	Bulk
Packaging Quantity	1

Statements of suitability for certain applications are based on our knowledge of typical operating conditions for such applications, but are not intended to constitute - and we specifically disclaim - any warranty concerning suitability for a specific customer application or use. This Information is intended for use only by customers who have the requisite experience and capability to determine the correct products for their application. Any technical advice inferred from this Information or otherwise provided by us with reference to the use of our products is given gratis, and we assume no obligation or liability for the advice given or results obtained.